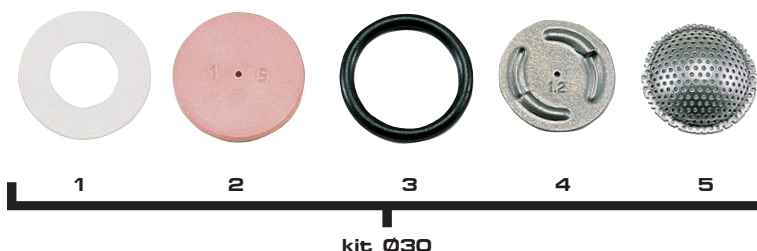




KIT Ø30



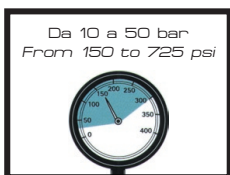
kit Ø30

Materiali: acciaio inox - allumina - NBR.

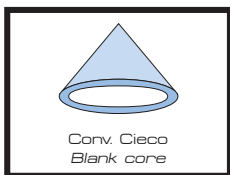
Impiego: su M87 / M77 per trattamenti fungicidi ed insetticidi. **Confezioni da:** 100

Materials: stainless steel - ceramic - Buna N.

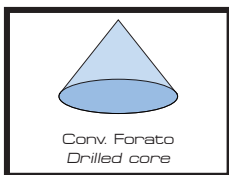
Use: fungicide and insecticide applications on M87 / M77 nozzle. **Pieces per box:** 100



Da 10 a 50 bar
From 150 to 725 psi



Conv. Cieco
Blank core



Conv. Forato
Drilled core

COME SI ORDINA / HOW TO ORDER

Ricambi Spare parts	Foro mm Hole mm		
1	71.601.9	-	25
2	71.1802.63	Ø0.8	25
	71.1802.34	Ø1.0	25
	71.1802.35	Ø1.2	25
	71.1802.36	Ø1.5	25
	71.1802.37	Ø1.8	25
	71.1802.64	Ø2.0	25
3	77.602.41	-	25
4	71.204.8	cieco / blank	25
	71.204.3	Ø1.2	25
	71.204.4	Ø1.5	25
	71.204.5	Ø1.8	25
	71.203.3	-	25

FILTRO STRAINER	COME SI ORDINA HOW TO ORDER				Pressione bar	Portata l/min.	Angolo di spruzzo Spray angle	Pressure psi	Capacity USGal/min
	KIT	Ugello mm. Tip mm.	Convogliatore mm.	Core dia. mm.					
MESH 40	71.810.35	Ø 0.8	cieco blank	10	0.95	30°	150	0.26	
				20	1.18	30°	300	0.32	
				30	1.41	35°	450	0.39	
				40	1.65	35°	600	0.45	
	71.810.36	Ø 1.0	cieco blank	10	1.15	45°	150	0.31	
				20	1.40	45°	300	0.38	
				30	1.65	50°	450	0.45	
				40	1.88	50°	600	0.51	
	71.810.37	Ø 1.2	cieco blank	10	1.45	50°	150	0.40	
				20	1.78	60°	300	0.49	
				30	2.11	60°	450	0.58	
				40	2.45	60°	600	0.67	
71.810.38	Ø 1.2	Ø 1.2	10	2.20	45°	150	0.58		
			20	3.10	45°	300	0.83		
			30	3.80	50°	450	1.05		
			40	4.50	50°	600	1.20		
MESH 30	71.810.39	Ø 1.5	cieco blank	10	1.75	50°	150	0.47	
				20	2.45	60°	300	0.66	
				30	3.00	60°	450	0.80	
				40	3.50	60°	600	0.93	
	71.810.40	Ø 1.5	Ø 1.2	10	3.60	45°	150	0.98	
				20	4.48	45°	300	1.22	
				30	5.35	50°	450	1.46	
				40	6.25	50°	600	1.71	
	71.810.41	Ø 1.5	Ø 1.5	10	3.75	40°	150	1.00	
				20	5.30	40°	300	1.43	
				30	6.50	45°	450	1.72	
				40	7.50	45°	600	2.00	
71.810.42	Ø 1.8	cieco blank	10	2.20	45°	150	0.60		
			20	3.10	50°	300	0.82		
			30	3.80	50°	450	1.00		
			40	4.50	50°	600	1.20		
71.810.43	Ø 1.8	Ø 1.5	10	4.95	50°	150	1.32		
			20	7.00	50°	300	1.80		
			30	8.60	55°	450	2.20		
			40	9.90	55°	600	2.60		
71.810.44	Ø 1.8	Ø 1.8	10	5.10	40°	150	1.35		
			20	7.20	40°	300	1.90		
			30	8.80	45°	450	2.35		
			40	10.20	45°	600	2.70		
71.810.45	Ø 2.0	cieco blank	10	2.60	45°	150	0.70		
			20	3.70	50°	300	0.98		
			30	4.50	50°	450	1.20		
			40	5.20	50°	600	1.38		
71.810.46	Ø 2.0	Ø 1.8	10	6.10	45°	150	1.65		
			20	7.85	45°	300	2.13		
			30	9.65	50°	450	2.65		
			40	11.50	50°	600	3.15		